

What is the new approach?



Scope of the Assessment

What is a Watershed Assessment?



What is a Watershed Assessment?

- Summarizes existing data + analyses
- Addresses data gaps + big picture questions
- Coordinates and guides all agency led work
- Provides justification to funding sources

What is a Watershed Assessment?

What is it not?

- It is not a solution for everything
- It is not an on the ground project
- It is not repeating work already in place
- It is not defining what will happen

What is an Action Plan?

- Prioritization of appropriate actions
- Address subwatershed action types
- Assesses limiting factors
- Provide holistic baseline information

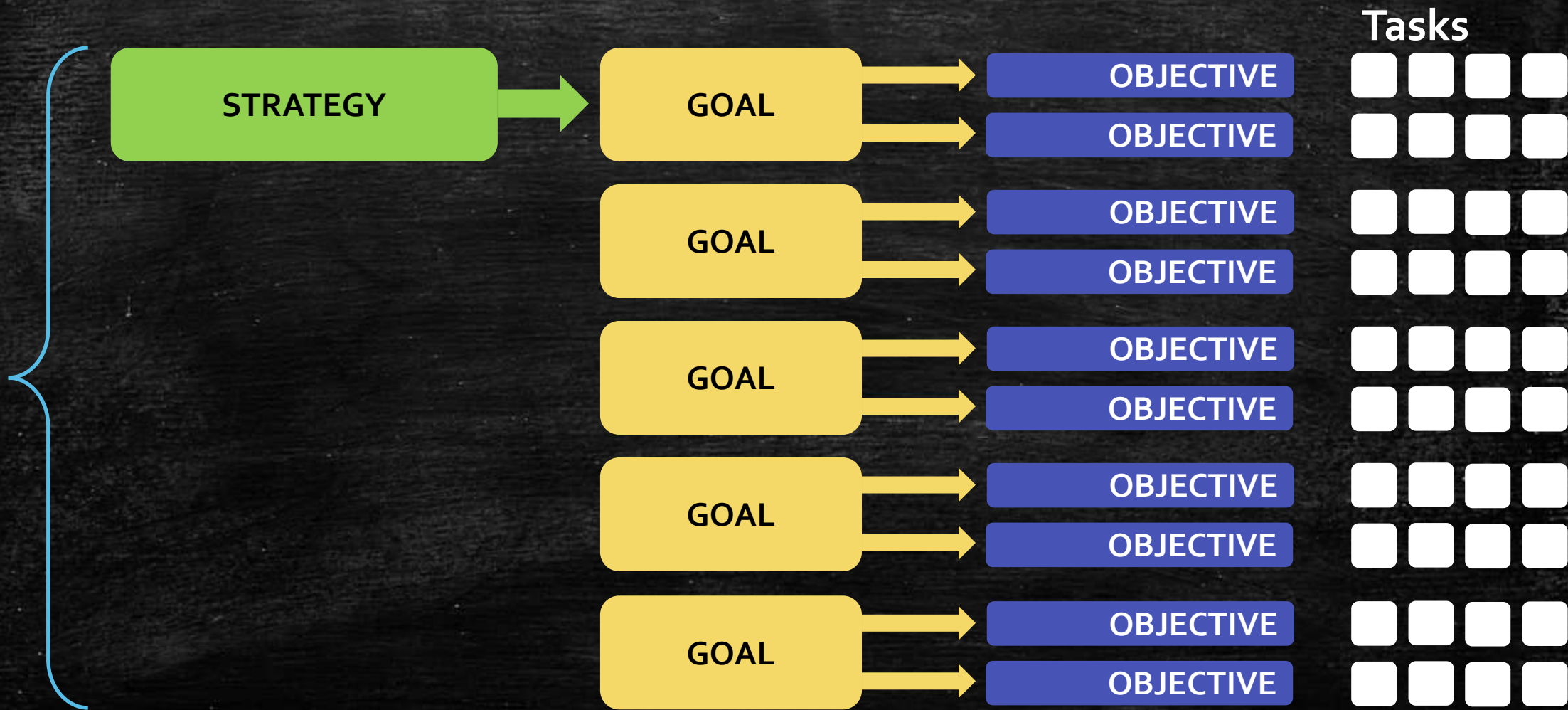
What is an Action Plan?

What is it not?

- Site specific detailed designs
- A regulatory or enforceable document
- Unlimited wish list of projects
- A replication of previous efforts

Vision. Strategy. Goals. Objectives. Tasks.

Vision



Birch Creek Assessment + Action Plan

Our shared vision is to establish Birch Creek as a healthy and functional ecosystem, which also is a reliable water source and enjoyable place for recreation, so that Birch Creek sustainably supports native fish populations in balance with the needs of adjacent agriculture and the local economy.

Vision

Birch Creek Assessment + Action Plan

- Healthy and functional ecosystem
- Reliable water resource
- Sustainable native fish populations
- In balance with community and agriculture

Vision

Birch Creek Assessment + Action Plan

Collaboration: Technical team and the community

- Assessment

- Baseline conditions
- Fish success limiting factors
- Stream and floodplain function

- Action Plan

- Identify + prioritize conservation and restoration
- Thriving natural habitats for fish
- Support a thriving community and strong economy

Strategy

Birch Creek Assessment + Action Plan

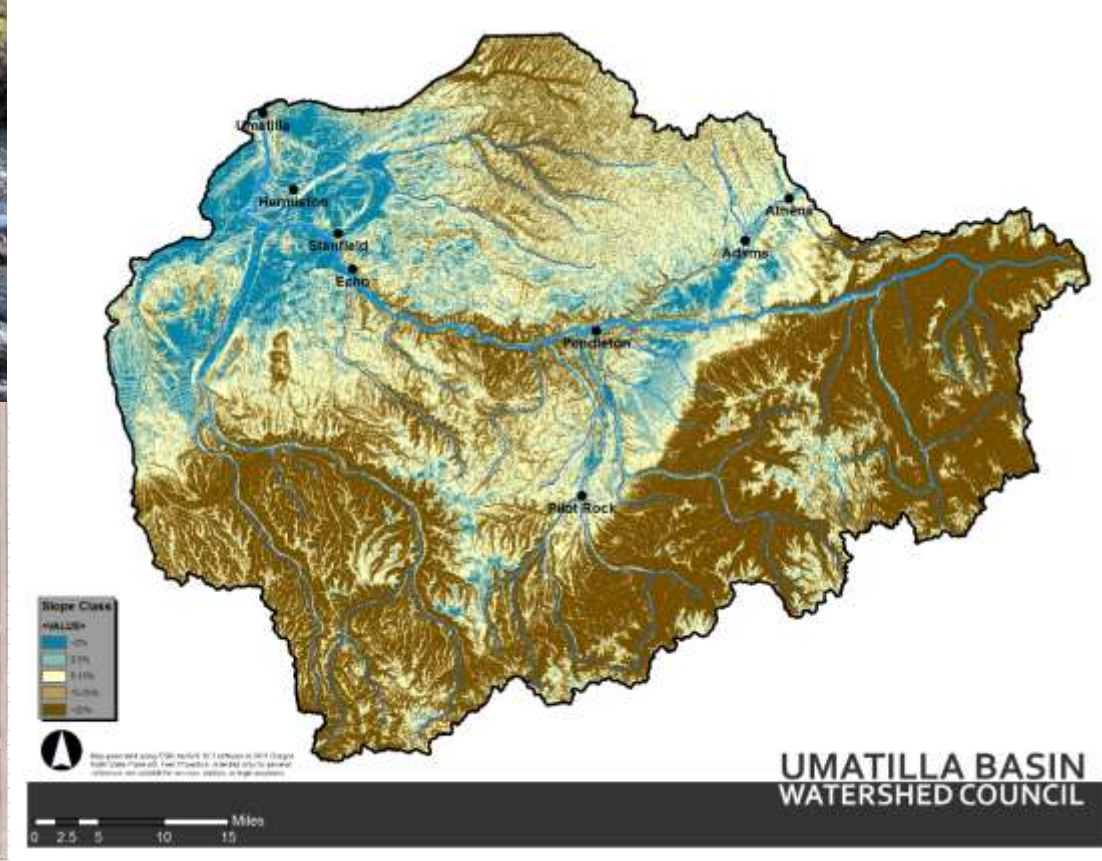
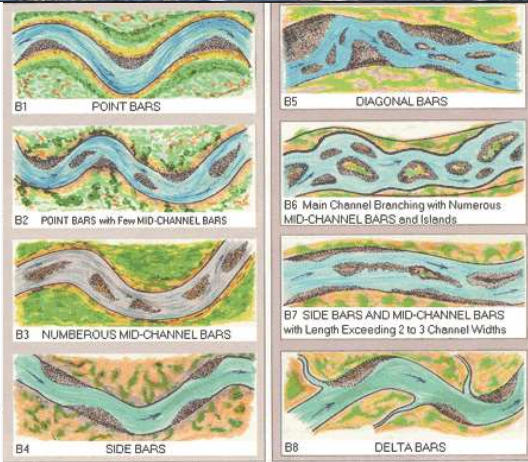
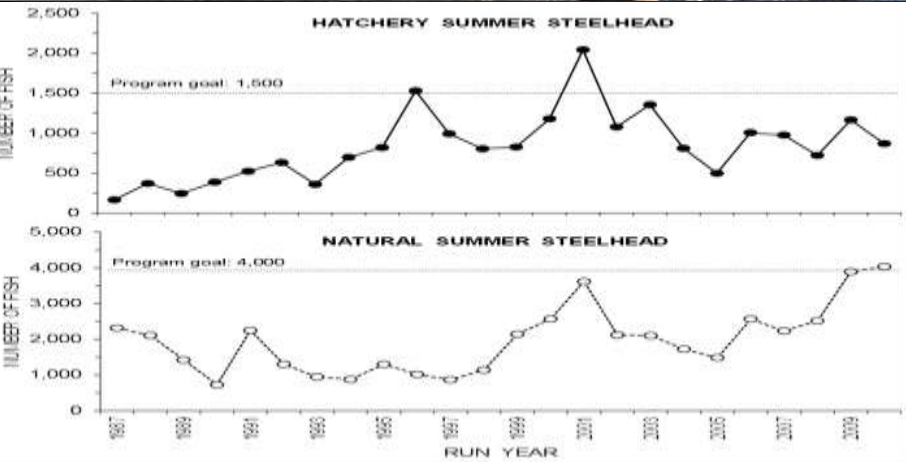
- Build community trust and collaboration
- Understand current watershed conditions and processes that affect Birch Creek
- Plan for future habitat restoration and stream management actions at Birch Creek

Goals: Project specific

Birch Creek Assessment + Action Plan

- Promote a healthy watershed
- Promote a reliable water supply
- Promote water quality improvements
- Promote improved riparian plant community health
- Promote a healthy fish community

Goals: Long term (10-50yr)



Watershed Assessment Process